



GMT MONTHLY MEMBERSHIP PROGRESS REPORT

Results as of: 6/30/2020

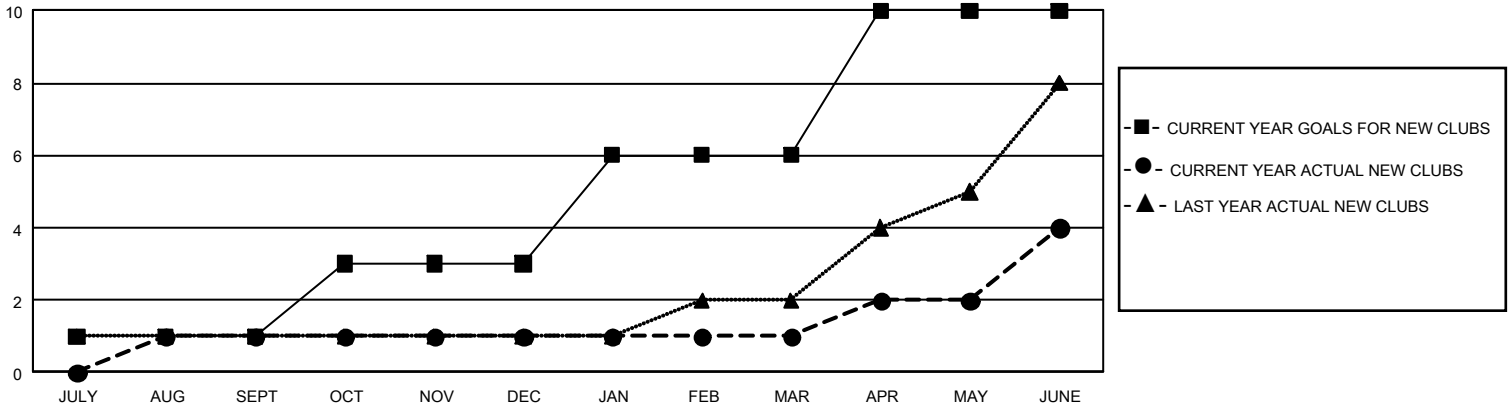
GMT Constitutional Area 1, Group L

GMT: OPEN

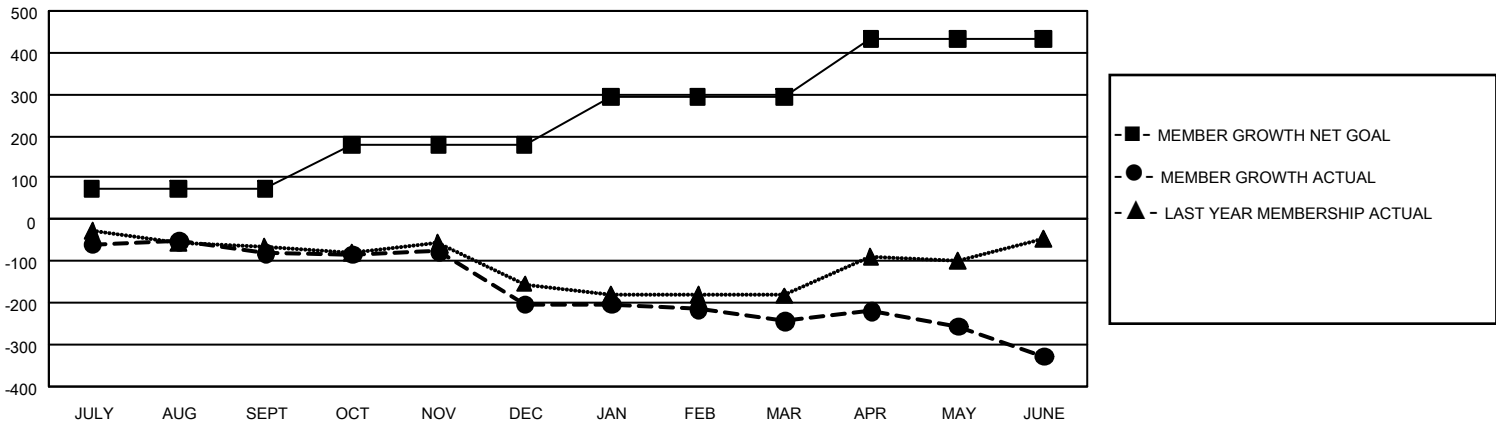
REPORT DOES NOT INCLUDE CLUBS IN UNDISTRICTED AREAS.

Clubs				Members			
RESULTS FOR 2019-2020				RESULTS FOR 2019-2020			
QUARTER	NEW CLUB GOAL	NEW CLUBS	DROPPED CLUBS	QUARTER	MEMBER GROWTH NET GOAL	MEMBER GROWTH ACTUAL	DROPPED MEMBERS ACTUAL (including transfers)
JULY/AUG/SEPT	3	1	1	JULY/AUG/SEPT	219	112	182
OCT/NOV/DEC	6	0	2	OCT/NOV/DEC	318	161	275
JAN/FEB/MAR	9	0	1	JAN/FEB/MAR	345	120	150
APR/MAY/JUNE	12	3	4	APR/MAY/JUNE	414	219	285

GOALS AND ACTUAL NEW CLUBS CUMULATIVE



GOALS AND ACTUAL MEMBERS CUMULATIVE



DROPPED CLUBS: 8	142 CLUBS OF 233 ADDED 1 OR MORE NEW MEMBERS	<u>GENDER DISTRIBUTION</u>	
<u>DROPPED MEMBERS</u>		MALE	3,302 (50.87%)
DECEASED	92	FEMALE	3,189 (49.13%)
CLUB CANCELLED	46	TOTAL FAMILY UNIT MEMBERS 857	
OTHER	754		
TOTAL	892		
CLICK HERE FOR CUMULATIVE MEMBERSHIP DATA			